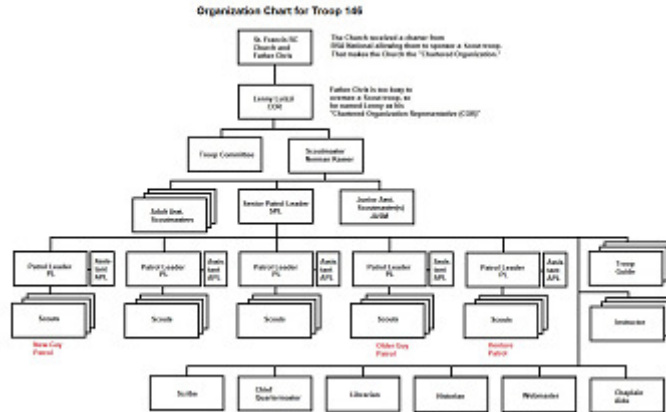


Describe how the Scouts in the troop provide its leadership.



1. Which box on the chart do you go into?

5. Baden-Powell also insisted that Scouts must be organized into patrols. He suggested 8 Scouts per patrol but didn't make a big deal of it. How many patrols are on the chart?
-
6. Some Scout troops have permanent patrols, such as Troop 279 in Pennsylvania, which has five that persist year-after-year. Our troop decided on starting fresh every September and March. Given that Cub Scouts join the troop in early March, how many months will a "New-Guy Patrol" exist before it's disbanded?
-
7. The troop's Venture Patrol is a special case. When a Scout turns 14, he automatically becomes a member of the Venture Patrol. Choose one correct answer:
- a. ____ When a Scout turns 14, he becomes a member of the Venture Patrol and leaves his old patrol behind.
 - b. ____ When a Scout turns 14, he belongs to two patrols at the same time. He has "dual citizenship."
8. The head of each patrol is the Patrol Leader (PL). Who gets the job? Choose one correct answer:
- a. ____ The Scoutmaster and SPL consult and then announce the names of that session's PLs.
 - b. ____ The members of each patrol decide who their PL will be by way of a secret ballot election.
9. Each Patrol Leader (PL) needs to have an assistant (APL) to fill in when the PL is sick or occupied doing something else. Who gets the job? Choose one correct answer:
- a. ____ The PL names the Scout in his patrol that he wants to be his APL. The APL is selected, not elected.
 - b. ____ The members of each patrol decide who their APL will be by way of a secret ballot election.
10. Our troop runs a point-based patrol competition. The job description for the PL is just one word: WIN! The question is, easy or hard? Choose one correct answer:
- a. ____ Easy! All the PL has to do is show up for things, wear his uniform, and set a good example. If he does all these things, his patrol will surely win the competition.
 - b. ____ Hard! The PL can't win the competition on his own. He has to get all the other members of his patrol to do things that will earn points. The PL has to figure out how to make that happen.

11. Take another look at the chart and find 8 more boxes showing Scouts who report to the SPL, for example "Troop Guide" and "Scribe". These are all jobs that need to get done, but is it easy or hard to get Scouts to volunteer for these positions? Choose one correct answer:
- a. ____ Easy! It turns out that a Scout planning to earn the ranks of Star, Life, and Eagle MUST serve actively in one of these leadership positions. As a result, we always have volunteers.
 - b. ____ Hard! Lots of guys prefer not to volunteer for extra work. They already have enough responsibilities with homework and sports and school applications.

12. Draw lines connecting each leadership position box with its matching job description.

Leadership Position

Patrol Leader
PL

Troop
Guide

Instructor

Scribe

Chief
Quartermaster

Librarian

Historian (1)

Historian (2)

Webmaster

Chaplain
Aide

Job Description

Promote earning of
religious emblems

Prepare and teach
a topic for rank
advancement

Prepare and
update the
troop history

Patrol competition
score keeper

Prepare scout resumes
for Boards of Review

Organize and
maintain
troop gear

Win the patrol
competition

Maintain the quiz
library, both online
and paper

Assist the
Patrol Leader
as needed

Maintain
www.Troop146.org

Organization Chart for Troop 146

