



**BOY SCOUTS OF AMERICA**  
**Troop 146**  
St. Francis Church  
308 Jefferson Street  
Hoboken, NJ 07030  
www.Troop146.org

**Second Class Requirement 3a2**  
**"Demonstrate how to orient a map."**  
(Handbook page 343)

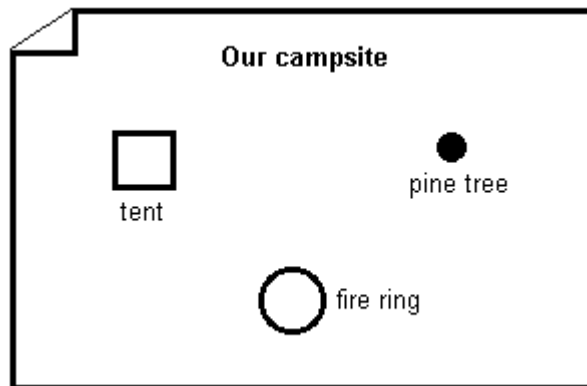
\_\_\_\_\_ Name

**1. What does it mean to "orient a map"?**

**REMEMBER THIS:**

**Orienting a map means turning the map so that it matches real life.**

Here's a hand-drawn map of a campsite:

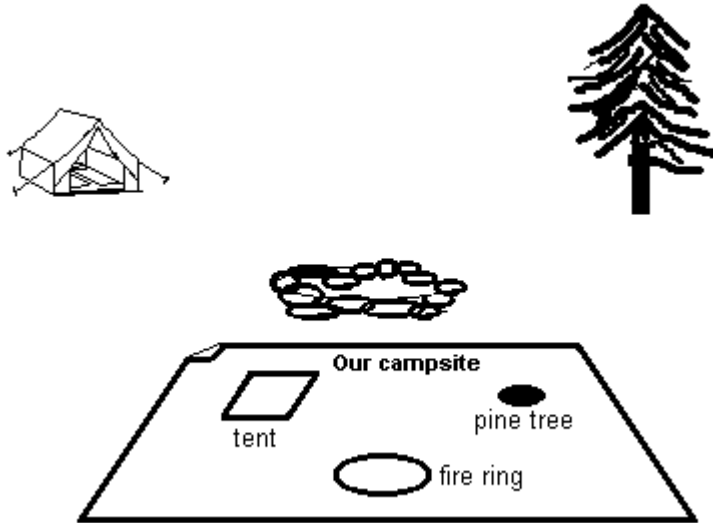


Pretend you are standing in the campsite and you are holding the map in front of you.

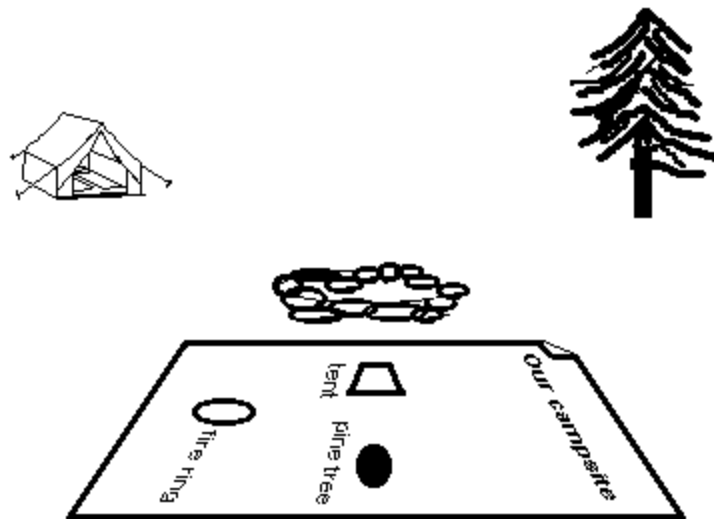
**There is only one way to hold the map correctly. All other ways are wrong!**

You must hold the map so that it is turned to match the real-life campsite.

This is the correct way to turn and hold the map  
(It is oriented correctly)



This is a wrong way to turn and hold the map!  
(The map is not oriented correctly!)



What does it mean to “orient a map”?

---

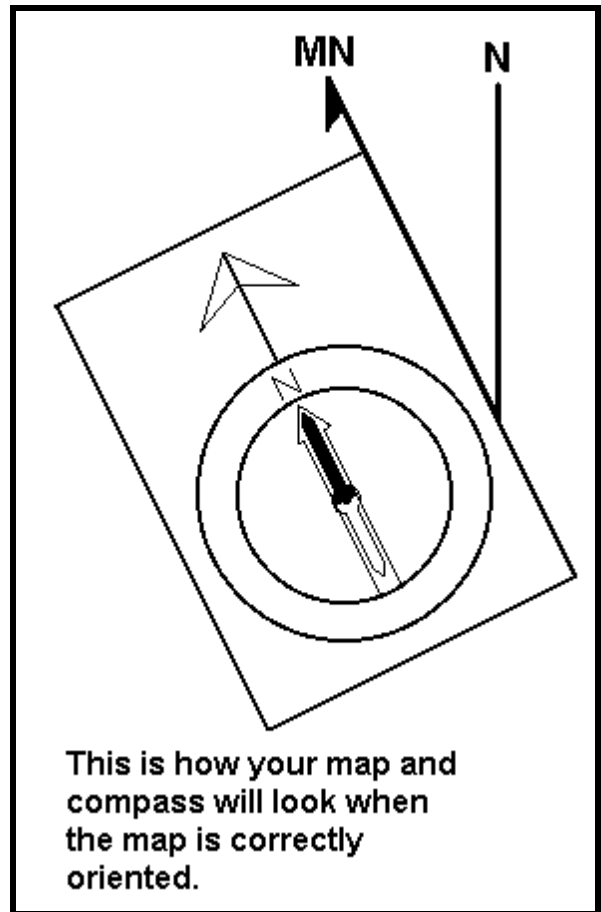
## 2. Orienting a map for Second Class

Remember, “orienting a map” means turning it so that it reflects real life, so that what’s north on the map is what’s north in real life.

Typically, you will have to orient a trail map or a road map.

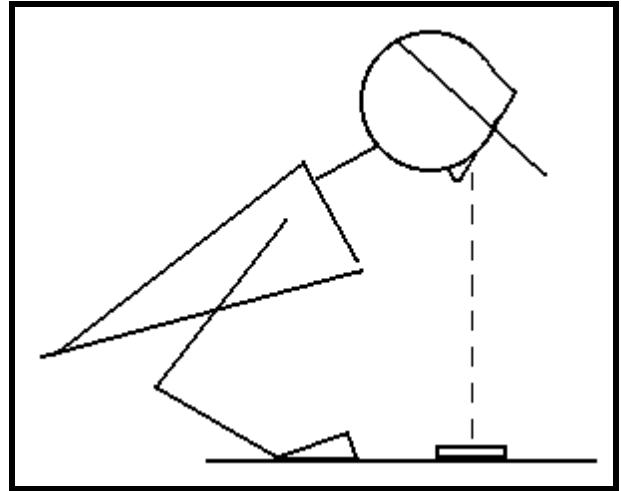
### Follow these four steps:

- A. Put your map on a table or on the ground.
- B. Turn the compass housing so its north "N" lines up with the direction-of-travel arrow.
- C. Lay the edge of the compass along the map’s magnetic north “MN” line.
- D. Grab the edges of the map and gently rotate the map and compass together until the compass needle is floating above the orienting arrow.



While rotating the map, it's easy to jar the compass off the "MN" line. You may have to fix it and recheck several times before you get it perfectly.

When checking if the compass needle is floating above the orienting arrow, position your head directly over the compass so that you can look straight down at it.



Here's a map you can practice on.

